

SIGNAL ET IMAGE

3 ECTS

12H Cours

18 TP (Python + Cython)

JULIEN LEFÈVRE

Julien.lefevre@univ-amu.fr

CONTENU

Introduction au traitement d'images

rehaussement, couleur

Traitements locaux

filtrage, morphologie mathématique

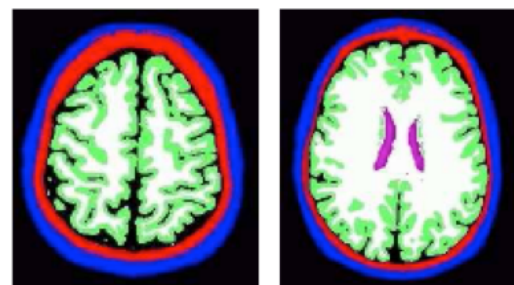
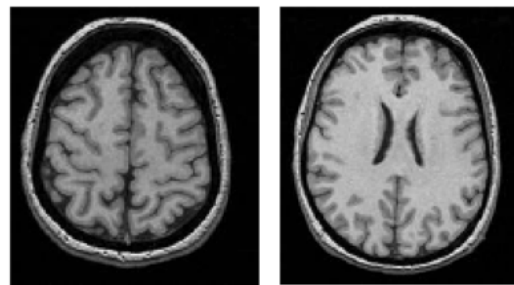
Base de la segmentation

approches régions, contours

Compression d'images

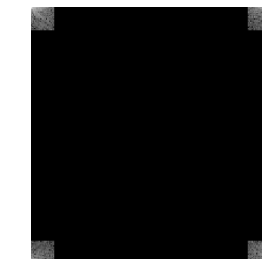
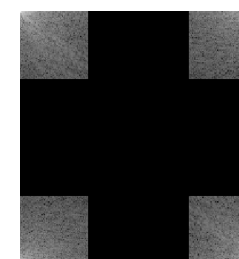
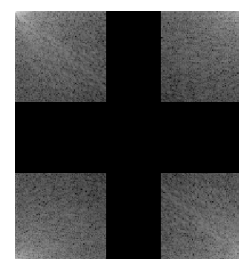
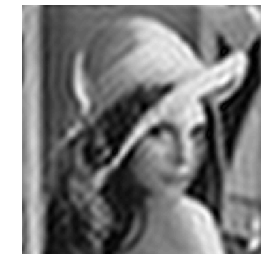
transformée de Fourier, compression JPG

Images IRM



Segmentation

Filtrage dans l'espace de Fourier



Reconstruction